

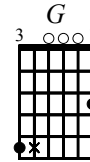
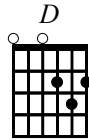
# Man of Constant Sorrow

(Key of F, but "Bluesy")

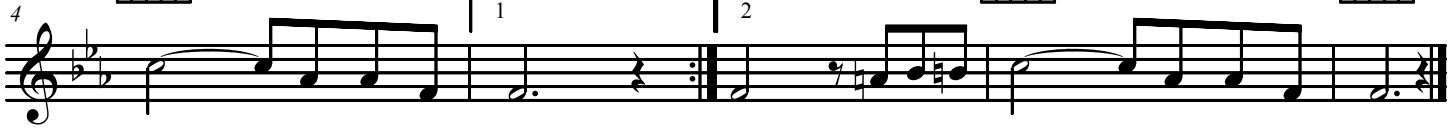
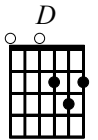
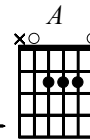
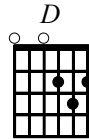
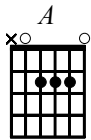
Trad. arr. Dan Tyminski

Guitar "Drop D" Tuning

CAPO III D = F, G = Bb, A = C



I \_\_\_\_\_ am a man \_\_\_\_\_ of con-stant sor-row. I've seen  
I \_\_\_\_\_ bid fare - well \_\_\_\_\_ to old Ken - tuc - ky, place where



trou - ble all my days.  
I \_\_\_\_\_ was born and raised (he \_\_\_\_\_ was born and raised)